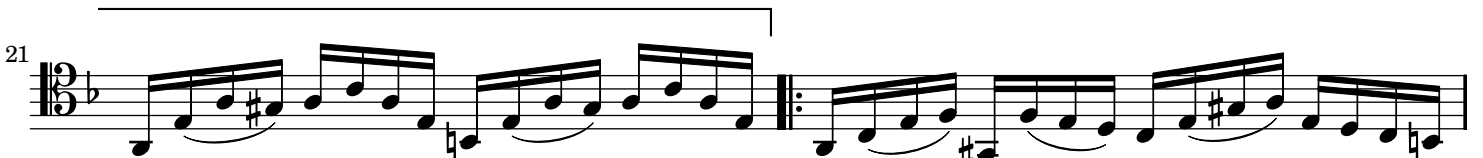
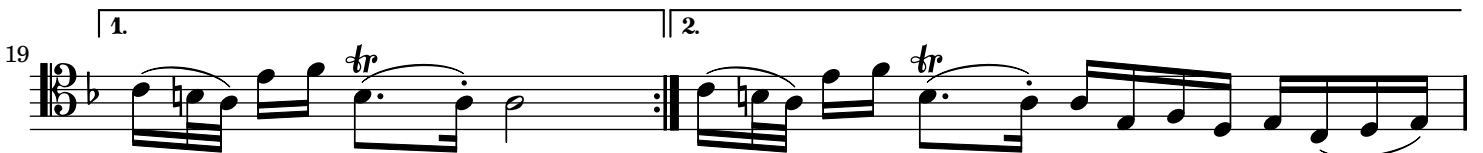


Allemande



The image displays a musical score for a single melodic line in 12/8 time. The score is organized into ten staves, each beginning with a measure number: 25, 27, 29, 31, 33, 35, 37, 39, 41, 43, 45, and 47. The key signature is one flat (B-flat), and the time signature is 12/8. The music consists of eighth and sixteenth notes, often grouped in pairs or fours, with various accidentals (sharps, flats, naturals) and phrasing slurs. A first ending bracket labeled '1.' spans measures 45 to 46, and a second ending bracket labeled '2.' spans measures 47 to 48. The piece concludes with a double bar line and repeat dots in measure 48.